



OAKLAND COUNTY FEDERAL AID FUNDING COMMITTEE

AGENDA

TUESDAY – MAY 19, 2009

9:00 A.M.

The Gateway Room

City of Novi Civic Center

45175 W. Ten Mile

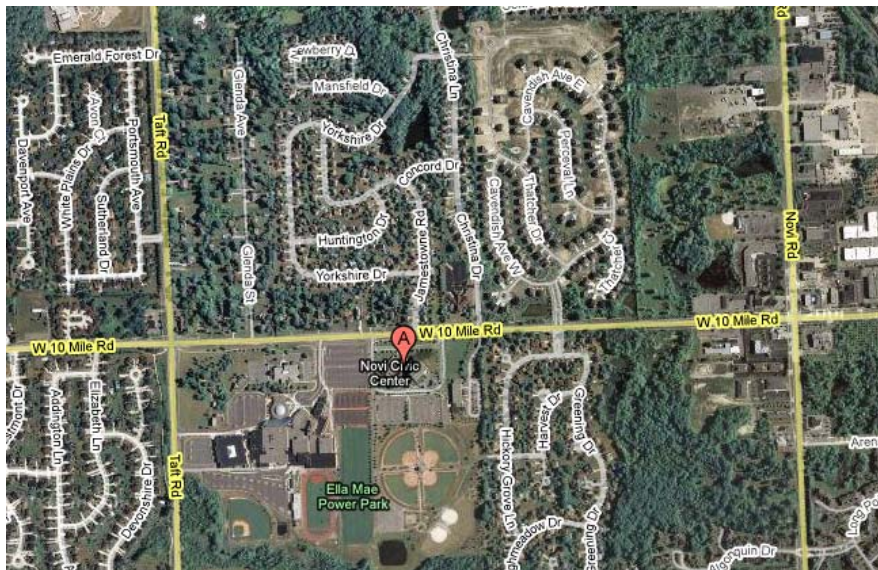
Novi, MI 48375 (Map Attached)

ITEM	DESCRIPTION	PROCESS	ATTACHMENT
I.	Welcome & public comment	-	-
II.	Approval of March 10, 2009 minutes	Action	A
III.	Chairpersons Report 1. Funding legislation update 2. Update on preventative maintenance 3. Summer PASER schedule	Information	
IV.	SEMCOG Report – Mr. Chris Mann 1. FY2010-2013 TIP update	Information	
V.	MDOT Report – Ms. Pamela Boyd	Information	
VI.	Selection of second call for FY2013 projects	Action	
VII.	Progress report of approved stimulus projects	Information	B
VIII.	Progress report of FY2009 regular projects	Information	C
IX.	Other Business – 1. Annual FAC Task Force Meeting	-	-
X.	Adjourn	-	-



Map to:

The Gateway Room
City of Novi Civic Center
45175 W. Ten Mile
Novi, MI 48375





OAKLAND COUNTY FEDERAL AID FUNDING COMMITTEE

MINUTES

Funding Committee Special Meeting – March 10, 2009

Time: 9:00 AM

The Costick Center

28600 W. Eleven Mile

Farmington Hills, MI 48336

I. INTRODUCTION & WELCOME

Chairperson Mr. David Evancoe called the meeting to order at 9:05 AM. He welcomed the group and thanked the officials from Farmington Hills for hosting the meeting at the Costick Center.

II. PUBLIC COMMENT

Mr. Evancoe opened the floor for public comments or questions related to federal aid transportation funding.

Ms. Julie LeBlanc of the 4 Towns Citizen Action Team mentioned that the roads in Oakland County are severely riddled with potholes and asked if there were weight restrictions on roads in Oakland County. Mr. Evancoe responded that there were seasonal weight restrictions which are put into place on RCOC roads.

No other attendees requested to make a comment and Mr. Evancoe closed the public comment portion of the meeting.

III. APPROVAL OF MINUTES OF February 24, 2009

Mr. Evancoe referred the committee to the February 24, 2009 meeting minutes included in the agenda packet and asked if anyone had any additions, changes or deletions. No changes were requested.

Motion by Mr. Zoner, supported by Ms. Pilchowski, to approve the minutes of the February 24, 2009 Federal Aid Funding Committee meeting. **Motion Carried**

IV. STIMULUS UPDATE

Mr. Evancoe discussed the stimulus project list developed at the February 24th, 2009 meeting. He indicated that the amount of stimulus revenue coming to the Oakland FAC has been reduced from \$26.6 million to \$25.2 million. Several members asked why this reduction occurred. Mr. Mann explained that there was a three percent off the top deduction at the state level which went to enhancement funds. Secondly, federal law indicated that 30 percent would be spent at the urban local level, but that did not mean that individual municipalities would receive thirty percent.

Mr. Mann did note that MDOT is anticipating that other states may not be in a position to utilize all of their stimulus money. Therefore, he recommended that the FAC develop an obligation ready reserve project list that can take advantage of any additional funds. This reserve, or "B" list was created by the committee and is included as Appendix A.

V. REALLOCATION OF STP FUNDS

Mr. Evancoe presented the committee with the updated regular STP project lists. 2010 was over target, and there were available funds in each of the years 2011 through 2013 due to several projects being moved to stimulus.

Motion by Mr. Northrup, supported by Mr. Biasell, to adjust approved and funded projects in the years 2010 through 2013 in order to meet the STP targets for each year.

Motion Carried

The changes selected by the funding committee are identified by the entries highlighted in yellow in Appendix B.

VI. REALLOCATION OF STIMULUS FUNDS

Based on the lower stimulus revenue estimates, the committee decided to remove three projects in order to meet the new estimate. The following projects were removed from the stimulus list, and put back into their originally approved STP location.

PROJECT	LIMITS	TYPE	COMMUNITY
CESAR CHAVEZ	WOODWARD TO MONTCALM	RRR	PONTIAC
LINCOLN	CAMPBELL TO STEPHENSON	RRR	ROYAL OAK
WALTON	JOSLYN TO E. CITY LIMITS	RRR	PONTIAC

The remaining final stimulus project candidate list is identified in Appendix C.

VII. SECOND CALL FOR PROJECTS FOR FY2013

After regular STP projects were adjusted to meet existing financial targets and in response to projects being fully funded with stimulus funds, \$12.135 million became available in TIP year 2013. The committee discussed how to address those available funds.

Motion by Mr. Zoner, supported by Tom Blust, to issue a second call for projects for FY2013 which includes candidates for Next Phase, 3R, and 4R projects. Mr. Photiades dissented.

Motion Carried

VIII. NEXT MEETING

The next regular Funding Committee meeting was scheduled for May 19, 2009 at 9:00 and will be hosted by the City of Novi.

IX. ADJOURN

Mr. Evancoe thanked everyone for attending and adjourned the meeting at 12:09 PM.

KH

ATTENDEES**Present**

David Evancoe
 Tom Blust
 Tom Noechel
 Ken Hudak
 Bruce Jerome
 Dennis Dembiec
 Harry Drinkwine
 Richard Haberman
 Tom Biasell
 Kevin McCarthy
 Mark Saksewski
 Byron Photiades
 Edward Klobucher
 Charles Hamilton
 Jim Schafer
 Rob Hayes
 Kevin Yee
 Allan Schneck
 Paul Shumejko
 Elden Danielson
 Matt Callahan
 Gary Mekjian
 Robert Northrup
 Bill Huotari
 Loyd Cureton
 Tony Nowicki
 Arthur Shufflebarger
 Ed Coy
 Tom Zoner
 Brian Blaesing
 Triscia Pilchowski
 Don Green
 Gonzalo Puente
 Charlotte Burckhardt
 Christopher Mann
 Jennifer Chehab
 Scott Ringler
 Beata Lamparski
 Steve Dearing
 Rob Lavoie
 Eric Harris
 Julie LeBlanc

Affiliation

RCOC
 RCOC
 RCOC
 RCOC
 City of Berkley
 City of Birmingham
 City of Clawson
 City of Clawson
 City of Farmington Hills
 City of Farmington Hills
 City of Farmington Hills
 City of Ferndale
 City of Hazel Park
 City of Hazel Park
 City of Madison Heights
 City of Novi
 City of Oak Park
 City of Pontiac
 City of Rochester Hills
 City of Royal Oak
 City of Royal Oak
 City of Southfield
 City of Southfield
 City of Troy
 City of Walled Lake
 City of Wixom
 Village of Milford
 Village of Ortonville
 Commerce Township
 Commerce Township DDA
 Highland Township
 Milford Township
 MDOT
 Oakland County Planning
 SEMCOG
 AEW
 GWE
 HRC
 OHM
 Nowak & Fraus
 Wade Trim
 4 Towns Citizen Action Team

STIMULUS PROJECTS ALTERNATE LIST

"B" LIST

PROJECT	LIMITS	WORK	JURISDICTION	YEAR	PHASE	FUND	FED(\$000)	NONFED(\$000)	STIMULUS (\$000)	POINTS	RUNNING TOTAL
First Priority											
CESAR CHAVEZ	WOODWARD TO MONTCALM	RRR	PONTIAC	2012	CON	STPU	\$356	\$356	\$712	52.1	\$712
LINCOLN	CAMPBELL TO STEPHENSON	RRR	ROYAL OAK	2012	CON	STPU	\$304	\$202	\$506	47.4	\$506
WALTON	JOSLYN TO E. CITY LIMITS	RRR	PONTIAC	2013	CON	STPU	\$612	\$104	\$716	57.35	\$1,222
B List											
MAIN STREET	13 MILE TO CHIPPEWA	RRR	ROYAL OAK	2010	CON	STPU	\$235	\$156	\$391	56.7	\$1,613
NORMANDY RD	CROOKS TO MAIN STREET	RRR	ROYAL OAK	2011	CON	STPU	\$580	\$249	\$829	51.5	\$2,442
LAFAYETTE STREET	WAYNE STREET TO PERRY STREET	RRR	PONTIAC	2011	CON	STPU	\$64	\$64	\$128	41.7	\$2,570
ORCHARD LAKE	TWELVE MILE TO THIRTEEN MILE	RRR	RCOC	2012	CON	STPU	\$691	\$173	\$864	54.6	\$3,434
COMMERCE	S. COMMERCE TO UNION LAKE	RRR	RCOC	2012	CON	STPU	\$1,370	\$342	\$1,712	53.4	\$5,146
Meadowbrook	Ten Mile to Cherry Hill	RRR	Novi	2013	CON	STPU	\$363	\$91	\$454	57.10	\$5,600
Fourteen Mile	Halsted to Drake Road	RRR	Farmington Hills	2013	CON	STPU	\$1,286	\$322	\$1,608	56.50	\$7,208
Fourteen Mile	City Limits to Halsted	RRR	Farmington Hills	2013	CON	STPU	\$943	\$236	\$1,179	56.50	\$8,386
Grand River	Haggerty to Ten Mile	RRR	Farmington Hills	2013	CON	STPU	\$1,146	\$286	\$1,432	55.00	\$9,819
Walton	Baldwin to Joslyn Road	RRR	Pontiac	2013	CON	STPU	\$364	\$91	\$455	54.35	\$10,274
Twelve Mile	Coolidge to Woodward	RRR	RCOC	2013	CON	STPU	\$419	\$103	\$522	51.45	\$10,796
Nine Mile Rd	Beck to Taft	RRR	Novi	2013	CON	STPU	\$304	\$76	\$380	50.30	\$11,176
Orchard Lake	Voorheis to Woodward	RRR	Pontiac	2013	CON	STPU	\$233	\$233	\$466	50.15	\$11,642
Walton	W. City Limit to Baldwin	RRR	Pontiac	2013	CON	STPU	\$289	\$289	\$578	49.95	\$12,220
Nine Mile	Pinecrest to Planavon	RRR	Ferndale	2013	CON	STPU	\$320	\$80	\$400	47.70	\$12,620

FY 2009 - 2012
FAC PROJECT LIST (STPU)

PROJECT	LIMITS	WORK	JURISDICTION	YEAR	PHASE	FUND	FED(\$(\$))	NONFED(\$(\$))	Points Awarded
2010 TIP									
PAVE GRAVEL									
WHITE LAKE RD (Conv)	HIGHLAND HILLS TO EAGLE RD.	PAVE GRAVEL	RCOC	2009	Conv.	STPU	\$1,500	\$0	N/A
Subtotal							\$1,500		
URBAN TO RURAL TRANSFER									
ROCHESTER RD (Conv.)	PREDMORE TO LAKEVILLE	3R (URBAN TO RURAL)	RCOC	2010	Conv.	STPU	\$500	\$125	N/A
Subtotal							\$500		
NEXT PHASE									
MLK	ELM to M-59	RECON TO 5 LANE PAVEMENT	PONTIAC	2010	CON	STPU	\$5,576	\$1,394	
STEPHENSON HWY. (Conv)	14 MILE - 175	RESRF, RT LANES, C&G, DRAINS	TROY	2010	Conv.	STPU	\$2,657	\$0	
WATTLES (Conv.)	EAST & WEST OF ROCHESTER	RECON TO 4 LANE BLVD.	TROY	2010	Conv.	STPU	\$2,175	\$0	
Subtotal							\$10,408		
NEW PE									
Moved Orchard Lake PE to 2011							\$0	\$0	
Subtotal							\$0		
RRR									
14 MILE RD (Conv.)	DRAKE TO FARMINGTON	RRR	FARMINGTON HILLS	2010	Conv.	STPU	\$890	\$0	61
14 MILE RD (Conv.)	FARMINGTON TO ORCHARD LAKE	RRR	FARMINGTON HILLS	2010	Conv.	STPU	\$818	\$0	63.4
9 MILE RD (Conv.)	GREENFIELD RD. TO PARK LAWN	RRR	OAK PARK	2010	Conv.	STPU	\$713	\$0	60.4
SOUTH BLVD (Conv.)	MLK TO OPDYKE	RRR	PONTIAC	2010	CON	STPU	\$404	\$0	60.5
N. MAIN STREET	200' N. OF CROOKS TO 13 MILE	RRR	ROYAL OAK	2010	CON	STPU	\$527	\$352	58.5
MAIN STREET	13 MILE TO CHIPPEWA	RRR	ROYAL OAK	2010	CON	STPU	\$235	\$156	56.7
Subtotal							\$3,587		
4R									
MAIN STREET (Conv. - Multiple Years)	LINCOLN AVE TO MAPLE RD	4R	CLAWSON	2011	CONV	STPU	\$327	\$0	64.5
Moved to Stimulus									
JOSLYN RD.	WALTON TO N. CITY LIMITS	RRR	PONTIAC	2010	CON	STPU	\$210	\$53	60.1
CROOKS RD. (Conv.)	N. MAIN ST. TO WEBSTER	RRR	ROYAL OAK	2010	CON	STPU	\$561	\$0	56.9
WAYNE ST.	PIKE ST TO LAFAYETTE	RRR	PONTIAC	2010	CON	STPU	\$94	\$93	37.5

TOTAL	\$16,322
TARGET	\$16,322
DIFF.	\$0

Projects shown in yellow have had year changes due to stimulus backfill.

FY 2009 - 2012
FAC PROJECT LIST (STPU)

PROJECT	LIMITS	WORK	JURISDICTION	YEAR	PHASE	FUND	FED(\$\$\$)	NONFED(\$\$\$)	Points Awarded
2011 TIP									
PAVE GRAVEL									
WASHINGTON RD (Adv. Conv)	E. OF TIENKEN TO DEQUINDRE	PAVE GRAVEL	RCOC	2011	CON	STPU	\$1,500	\$375	N/A
Subtotal							\$1,500		
URBAN TO RURAL TRANS.									
ROCHESTER RD (Conv.)	PREDMORE TO LAKEVILLE	RRR	RCOC	2011	CON	STPU	\$500		N/A
Subtotal							\$500		
NEW PE									
BALDWIN ROAD	MORGAN TO WALDON	WIDEN	RCOC	2011	PE	STPU	\$1,090	\$273	67.8
12 MILE ROAD	BECK TO DIXON	WIDEN	RCOC	2011	PE	STPU	\$1,322	\$331	61.1
HALSTED RD	GRAND RIVER TO HILL TECH	WIDEN	FARMINGTON HILLS	2011	PE	STPU	\$1,201	\$3,001	56.0
ORCHARD LAKE ROAD	13 MILE TO 14 MILE	PE - moved from 2010	RCOC	2010	PE	STPU	\$659	\$165	66.1
Subtotal							\$4,272		
RRR									
FARMINGTON RD (Conv.)	13 MILE TO GLENMUER	RRR	FARMINGTON HILLS	2011	CONV	STPU	\$554	\$0	55.0
14 MILE RD	NORTHWESTERN TO MIDDLEBELT	RRR	FARMINGTON HILLS	2011	CON	STPU	\$745	\$187	54.9
LAFAYETTE STREET	WAYNE STREET TO PERRY STREET	RRR	PONTIAC	2011	CON	STPU	\$64	\$64	41.7
WALTON BOULEVARD (Conv)	CLINTONVILLE TO PONTIAC CITY LIMITS	RRR	RCOC	2011	CONV	STPU	\$804	\$0	55.3
WALTON BOULEVARD (Conv)	E/O ADAMS TO LIVERNOIS	RRR	RCOC	2011	CONV	STPU	\$1,130	\$0	54.9
ADAMS ROAD	SOUTH BLVD. TO AUBURN	RRR	RCOC	2011	CON	STPU	\$539	\$135	52.7
12 MILE RD	CROOKS TO MAIN STREET	RRR	ROYAL OAK	2011	CON	STPU	\$248	\$107	54.4
NONMANDY RD	CROOKS TO MAIN STREET	RRR	ROYAL OAK	2011	CON	STPU	\$580	\$249	51.5
ORCHARD LAKE	TWELVE MILE TO THIRTEEN MILE	RRR - moved from 2012	RCOC	2012	CON	STPU	\$691	\$173	54.6
COMMERCE	S. COMMERCE TO UNION LAKE	RRR - moved from 2012	RCOC	2012	CON	STPU	\$1,370	\$342	53.4
TWELVE MILE	WOODWARD TO CROOKS	RRR - moved from 2012	ROYAL OAK	2012	CON	STPU	\$983	\$421	54.4
Meadowbrook	Ten Mile to Cherry Hill	RRR - moved from 2013	Novi	2013	CON	STPU	\$363	\$91	57.10
Subtotal							\$8,071		
4R									
MAIN STREET (Conv.)	LINCOLN AVE TO MAPLE RD	4R - moved from 2010 (partial)	CLAWSON	2011	CONV	STPU	\$1,797	\$0	64.5
Subtotal							\$1,797		
Moved to Stimulus									
MIDDLEBELT ROAD	8 MILE TO 10 MILE ROAD	RRR	RCOC	2011	CON	STPU	\$826	\$207	57.6
CROOKS ROAD	EQUITY TO BIG BEAVER	RRR	RCOC	2011	CON	STPU	\$703	\$176	54.9
JOHN R ROAD	14 MILE TO MAPLE ROAD	RRR	RCOC	2011	CON	STPU	\$669	\$168	49.2
GENTERPOINT PKWY	OPDYKE TO SOUTH BLVD	RRR	PONTIAC	2011	CON	STPU	\$432	\$432	49.1
MIDDLEBELT ROAD	10 MILE TO 11 MILE	RRR	RCOC	2011	CON	STPU	\$538	\$135	48.9
ROCHESTER ROAD (Conv)	14 MILE TO ELMWOOD	RRR	RCOC	2011	CONV	STPU	\$280	\$0	48.4
TEN MILE RD	GREENFIELD TO KENOSHA	RRR	RCOC	2011	CON	STPU	\$409	\$103	46.6
ORCHARD LAKE (Conv)	8 MILE TO GRAND RIVER	RRR	RCOC	2011	CONV	STPU	\$346	\$0	46.6
CAMPBELL ROAD	13 MILE TO 14 MILE	RRR	MADISON HEIGHTS	2011	CON	STPU	\$1,023	\$438	45.0
FERN AVE	CHESTERFIELD TO INTERMODAL AVE	4R	FERNDAL	2011	CON	STPU	\$165	\$165	50.0
CHESTERFIELD	FAIR TO FERN	4R	FERNDAL	2011	CON	STPU	\$90	\$90	50.0

TOTAL	\$16,140
TARGET	\$16,322
DIFF.	\$182

FY 2009 - 2012
FAC PROJECT LIST (STPU)

PROJECT	LIMITS	WORK	JURISDICTION	YEAR	PHASE	FUND	FED(\$,\$)	NONFED(\$,\$)	Points Awarded						
2012 TIP															
PAVE GRAVEL															
WASHINGTON RD.	E. OF TIENKEN TO DEQUINDRE	PAVE GRAVEL	RCOC	2012	CONV	STPU	\$1,500	\$375	N/A						
Subtotal							\$1,500								
URBAN TO RURAL TRANSFER															
ROCHESTER RD	MACK TO FRICK	RRR	RCOC	2012	CON	STPU	\$500	-	N/A						
Subtotal							\$500								
RRR															
LIVERNOIS	BIG BEAVER TO WATTLES	RRR	RCOC	2012	CON	STPU	\$847	\$212	51.2						
CEGAR CHAVEZ	WOODWARD TO MONTCALM	RRR - moved from stimulus	PONTIAC	2012	CON	STPU	\$356	\$356	52.1						
ROCHESTER RD.	LAKEVILLE TO MACK	RRR	RCOC	2012	CON	STPU	\$1,212	\$303	52.0						
LINCOLN	CAMPBELL TO STEPHENSON	RRR - moved from stimulus	ROYAL OAK	2012	CON	STPU	\$304	\$202	47.4						
TWELVE MILE	N. MAIN TO N. CAMPBELL	RRR	ROYAL OAK	2012	CON	STPU	\$791	\$528	53.4						
Walton	Joslyn to E. City Limits	RRR - moved from stimulus & 2013	Pontiac	2013	CON	STPU	\$358	\$358	57.35						
Fourteen Mile	Halsted to Drake Road	RRR - moved from 2013	Farmington Hills	2013	CON	STPU	\$1,286	\$322	56.50						
Fourteen Mile	City Limits to Halsted	RRR - moved from 2013	Farmington Hills	2013	CON	STPU	\$943	\$236	56.50						
Grand River	Haggerty to Ten Mile	RRR - moved from 2013	Farmington Hills	2013	CON	STPU	\$1,146	\$286	55.00						
Walton	Baldwin to Joslyn Road	RRR - moved from 2013	Pontiac	2013	CON	STPU	\$364	\$91	54.35						
Grand River	Novi to Haggerty	RRR - moved from 2013	RCOC	2013	CON	STPU	\$1,703	\$426	52.70						
Crooks	Bannoor to Fountain	RRR - moved from 2013	RCOC	2013	CON	STPU	\$947	\$237	52.45						
Twelve Mile	Coolidge to Woodward	RRR - moved from 2013	RCOC	2013	CON	STPU	\$419	\$103	51.45						
Subtotal							\$10,677								
4R															
Lahser	Eleven Mile to Twelve Mile	4R - moved from 2013	RCOC	2013	CON	STPU	\$4,215	\$1,053	77.00						
Subtotal							\$4,215								
<table border="1"> <tr> <td>TOTAL</td> <td>\$16,892</td> </tr> <tr> <td>TARGET</td> <td>\$16,845</td> </tr> <tr> <td>DIFF.</td> <td>(\$47)</td> </tr> </table>										TOTAL	\$16,892	TARGET	\$16,845	DIFF.	(\$47)
TOTAL	\$16,892														
TARGET	\$16,845														
DIFF.	(\$47)														
Moved to Stimulus															
HALSTED	TWELVE MILE TO EMERALD FOREST	RRR	FARMINGTON HILLS	2012	CON	STPU	\$898	\$385	58.3						
HILTON	NINE MILE TO WOODWARD HEIGHTS	RRR	FERNDALE	2012	CON	STPU	\$237	\$237	55.9						
CHRYSLER SERVICE DRIVE	EIGHT MILE TO NINE MILE	RRR	HAZEL PARK	2012	CON	STPU	\$584	\$584	50.4						
CHRYSLER SERVICE DRIVE	NINE MILE TO TEN MILE	RRR	HAZEL PARK	2012	CON	STPU	\$508	\$508	49.4						
MEADOWBROOK	EIGHT MILE TO NINE MILE	RRR	NOVI	2012	CON	STPU	\$170	\$170	58.4						
NINE MILE	NOVI TO TAFT	RRR	NOVI	2012	CON	STPU	\$164	\$164	61.9						
NINE MILE	MEADOWBROOK TO HAGGERTY	RRR	NOVI	2012	CON	STPU	\$170	\$170	55.1						
NOVI RD.	I-96 TO TWELVE MILE	RRR	RCOC	2012	CON	STPU	\$662	\$165	52.5						
INKSTER RD.	NINE MILE TO TEN MILE	RRR	SOUTHFIELD	2012	CON	STPU	\$702	\$176	55.0						
INKSTER RD.	TEN MILE TO ELEVEN MILE	RRR	SOUTHFIELD	2012	CON	STPU	\$869	\$217	48.0						
TWELVE MILE	EVERGREEN TO SOUTHFIELD	RRR	RCOC	2012	CON	STPU	\$825	\$206	59.2						
OPDYKE	SOUTH BLVD. TO AUBURN	RRR	RCOC	2012	CON	STPU	\$911	\$228	56.2						
ORCHARD LAKE	MAPLE TO LONE PINE	RRR	RCOC	2012	CON	STPU	\$1,399	\$350	58.0						
WHITE LAKE RD.	CLEMENT TO DIXIE HWY.	RRR	RCOC	2012	CON	STPU	\$789	\$197	54.0						
COOLEY LAKE RD.	HILLER TO CASS-ELIZABETH	RRR	RCOC	2012	CON	STPU	\$991	\$248	48.0						

FY 2009 - 2012
FAC PROJECT LIST (STPU)

PROJECT	LIMITS	WORK	JURISDICTION	YEAR	PHASE	FUND	FED(\$,\$)	NONFED(\$,\$)	Points Awarded
2013 TIP									
PAVE GRAVEL									
Various Roads	Various Limits	Pave Gravel	RCOC	2013	CON	STPU	\$1,500	\$300	N/A
Subtotal							\$1,500		
URBAN TO RURAL TRANSFER									
Rochester	Frick to S. Village Limits	3R	RCOC	2013	CON	STPU	\$500	\$100	N/A
Subtotal							\$500		
RRR									
Nine Mile Rd	Beck to Taft	RRR	Novi	2013	CON	STPU	\$304	\$76	50.30
Orchard Lake	Voorhels to Woodward	RRR	Pontiac	2013	CON	STPU	\$233	\$233	50.15
Walton	W. City Limit to Baldwin	RRR	Pontiac	2013	CON	STPU	\$289	\$289	49.95
Pontiac Lake	M-59 to Cass Lake	RRR	RCOC	2013	CON	STPU	\$702	\$176	49.45
Coolidge	Webster to Woodward	RRR	RCOC	2013	CON	STPU	\$566	\$141	48.25
Orchard Lake	13 Mile to 14 Mile	RRR	RCOC	2013	CON	STPU	\$834	\$208	48.00
Nine Mile	Pinecrest to Planavon	RRR	Ferndale	2013	CON	STPU	\$320	\$80	47.70
Subtotal							\$3,248		

TOTAL	\$5,248
TARGET	\$17,383
DIFF.	\$12,135

MOVED TO STIMULUS

None

Revised Oakland County Approved Stimulus Projects

PROJECT	LIMITS	WORK	JURISDICTION	ORIGINAL YEAR	PHASE	FUND	FED(\$\$\$)	NONFED(\$\$\$)	STIMULUS	Points Awarded
IN \$000'S										
PAVE GRAVEL										
RAY	East of M-24 to Oxford	PAVE GRAVEL	RCOC		CON	ARRA	\$1,500	\$0	\$1,500	n/a
URBAN TO RURAL TRANSFER										
RURAL OVERLAYS	VARIOUS LOCATIONS	OVERLAY	RCOC		CON	ARRA	\$500	\$0	\$500	n/a
PREVENTATIVE MAINTENANCE										
VARIOUS ROADS	VARIOUS ROADS	PREVENTATIVE MAINT.	VARIOUS						\$100	n/a
									SUBTOTAL	\$2,100
RRR										
HALSTED	TWELVE MILE TO EMERALD FOREST	RRR	FARMINGTON HILLS	2012	CON	ARRA	\$1,283	\$0	\$1,283	58.25
HILTON	NINE MILE TO WOODWARD HEIGHTS	RRR	FERNDALE	2012	CON	ARRA	\$475	\$0	\$475	55.9
CHRYSLER SERVICE DRIVE	EIGHT MILE TO NINE MILE	RRR	HAZEL PARK	2012	CON	ARRA	\$1,168	\$0	\$1,168	50.35
CHRYSLER SERVICE DRIVE	NINE MILE TO TEN MILE	RRR	HAZEL PARK	2012	CON	ARRA	\$1,017	\$0	\$1,017	49.35
CAMPBELL	13 MILE TO 14 MILE	RRR	MADISON HEIGHTS	2011	CON	ARRA	\$1,461	\$0	\$1,461	45
NINE MILE	NOVI TO TAFT	RRR	NOVI	2012	CON	ARRA	\$328	\$0	\$328	61.85
MEADOWBROOK	EIGHT MILE TO NINE MILE	RRR	NOVI	2012	CON	ARRA	\$340	\$0	\$340	58.35
NINE MILE	MEADOWBROOK TO HAGGERTY	RRR	NOVI	2012	CON	ARRA	\$340	\$0	\$340	55.1
JOSLYN	WALTON TO N. CITY LIMITS	RRR	PONTIAC	2010	CON	ARRA	\$263	\$0	\$263	60.1
CENTERPOINT PKWY	OPDYKE TO SOUTH BLVD	RRR	PONTIAC	2011	CON	ARRA	\$864	\$0	\$864	49.1
WAYNE ST.	PIKE ST TO LAFAYETTE	RRR	PONTIAC	2010	CON	ARRA	\$187	\$0	\$187	37.5
MIDDLEBELT	8 MILE TO 10 MILE ROAD	RRR	RCOC	2011	CON	ARRA	\$1,033	\$0	\$1,033	57.6
CROOKS	EQUITY TO BIG BEAVER	RRR	RCOC	2011	CON	ARRA	\$879	\$0	\$879	54.9
JOHN R	14 MILE TO MAPLE ROAD	RRR	RCOC	2011	CON	ARRA	\$837	\$0	\$837	49.2
MIDDLEBELT	10 MILE TO 11 MILE	RRR	RCOC	2011	CON	ARRA	\$673	\$0	\$673	48.9
ROCHESTER	14 MILE TO ELMWOOD	RRR	RCOC	2011	CONV	ARRA	\$350	\$0	\$350	48.4
TEN MILE	GREENFIELD TO KENOSHA	RRR	RCOC	2011	CON	ARRA	\$512	\$0	\$512	46.6
ORCHARD LAKE	8 MILE TO GRAND RIVER	RRR	RCOC	2011	CONV	ARRA	\$415	\$0	\$415	46.6
TWELVE MILE	EVERGREEN TO SOUTHFIELD	RRR	RCOC	2012	CON	ARRA	\$1,031	\$0	\$1,031	59.2
ORCHARD LAKE	MAPLE TO LONE PINE	RRR	RCOC	2012	CON	ARRA	\$1,749	\$0	\$1,749	58
OPDYKE	SOUTH BLVD. TO AUBURN	RRR	RCOC	2012	CON	ARRA	\$1,139	\$0	\$1,139	56.2
WHITE LAKE	CLEMENT TO DIXIE HWY.	RRR	RCOC	2012	CON	ARRA	\$986	\$0	\$986	54
NOVI RD.	I-96 TO TWELVE MILE	RRR	RCOC	2012	CON	ARRA	\$827	\$0	\$827	52.45
COOLEY LAKE	HILLER TO CASS-ELIZABETH	RRR	RCOC	2012	CON	ARRA	\$1,239	\$0	\$1,239	48
CROOKS	N. MAIN ST. TO WEBSTER	RRR	ROYAL OAK	2010	CON	ARRA	\$802	\$0	\$802	56.9
INKSTER	NINE MILE TO TEN MILE	RRR	SOUTHFIELD	2012	CON	ARRA	\$878	\$0	\$878	55
INKSTER	TEN MILE TO ELEVEN MILE	RRR	SOUTHFIELD	2012	CON	ARRA	\$1,086	\$0	\$1,086	48
									SUBTOTAL	\$22,161
4R										
FERN AVE	CHESTERFIELD TO INTERMODAL AVE	4R	FERNDALE	2011	CON	ARRA	\$330	\$0	\$330	50
CHESTERFIELD	FAIR TO FERN	4R	FERNDALE	2011	CON	ARRA	\$180	\$0	\$180	50
									SUBTOTAL	\$510

TOTAL AVAILABLE STIMULUS \$24,771 \$25,175

RURAL AREA										
OVERLAYS	VARIOUS ROADS	OVERLAY	RCOC		CON	ARRA-R			\$700	

TOTAL AVAIL RURAL AREA STIMULUS \$700 \$700

ATTACHMENT C
ARRA STIMULUS PROGRESS REPORT

PROJECT	LIMITS	TYPE	AGENCY	PROGRESS REPORT
---------	--------	------	--------	-----------------

PAVE GRAVEL

RAY	East of M-24 to Oxford	PAVE GRAVEL	RCOC	
-----	------------------------	-------------	------	--

RURAL

RURAL OVERLAYS	VARIOUS LOCATIONS	OVERLAY	RCOC	
----------------	-------------------	---------	------	--

PREVENTATIVE MAINTENANCE

VARIOUS ROADS	VARIOUS ROADS	PREV. MAINT.	VARIOUS	
---------------	---------------	--------------	---------	--

RRR

HALSTED	TWELVE MILE TO EMERALD FOREST	RRR	FARMINGTON HILLS	
HILTON	NINE MILE TO WOODWARD HEIGHTS	RRR	FERNDALE	
CHRYSLER SERVICE DRIVE	EIGHT MILE TO NINE MILE	RRR	HAZEL PARK	
CHRYSLER SERVICE DRIVE	NINE MILE TO TEN MILE	RRR	HAZEL PARK	
CAMPBELL	13 MILE TO 14 MILE	RRR	MADISON HEIGHTS	
NINE MILE	NOVI TO TAFT	RRR	NOVI	
MEADOWBROOK	EIGHT MILE TO NINE MILE	RRR	NOVI	
NINE MILE	MEADOWBROOK TO HAGGERTY	RRR	NOVI	
JOSLYN	WALTON TO N. CITY LIMITS	RRR	PONTIAC	
CENTERPOINT PKWY	OPDYKE TO SOUTH BLVD	RRR	PONTIAC	
WAYNE ST	PIKE ST TO LAFAYETTE	RRR	PONTIAC	
MIDDLEBELT	8 MILE TO 10 MILE ROAD	RRR	RCOC	
CROOKS	EQUITY TO BIG BEAVER	RRR	RCOC	
JOHN R	14 MILE TO MAPLE ROAD	RRR	RCOC	
MIDDLEBELT	10 MILE TO 11 MILE	RRR	RCOC	
ROCHESTER	14 MILE TO ELMWOOD	RRR	RCOC	
TEN MILE	GREENFIELD TO KENOSHA	RRR	RCOC	
ORCHARD LAKE	8 MILE TO GRAND RIVER	RRR	RCOC	
TWELVE MILE	EVERGREEN TO SOUTHFIELD	RRR	RCOC	
ORCHARD LAKE	MAPLE TO LONE PINE	RRR	RCOC	
OPDYKE	SOUTH BLVD. TO AUBURN	RRR	RCOC	
WHITE LAKE	CLEMENT TO DIXIE HWY.	RRR	RCOC	
NOVI RD	I-96 TO TWELVE MILE	RRR	RCOC	
COOLEY LAKE	HILLER TO CASS-ELIZABETH	RRR	RCOC	
CROOKS	N. MAIN ST. TO WEBSTER	RRR	ROYAL OAK	
INKSTER	NINE MILE TO TEN MILE	RRR	SOUTHFIELD	
INKSTER	TEN MILE TO ELEVEN MILE	RRR	SOUTHFIELD	

4R

FERN AVE	CHESTERFIELD TO INTERMODAL AVE	4R	FERNDALE	
CHESTERFIELD	FAIR TO FERN	4R	FERNDALE	

ATTACHMENT D
2009 STP-U Progress Report

PROJECT	LIMITS	TYPE	AGENCY	ACTIVITY	PROGRESS REPORT
PAVE GRAVEL					
WHITE LAKE RD (Adv Con 2010.)	HIGHLAND HILLS TO EAGLE RD.	PAVE GRAVEL	RCOC		CON
URBAN TO RURAL TRANSFER					
ROCHESTER RD (Adv. Con.2010)	PREDMORE TO LAKEVILLE	RRR	RCOC		CON
NEXT PHASE					
ROCHESTER RD	TORPEY TO BARCLAY	WIDEN TO 6 LANE BLVD.	TROY		CON
WATTLES (Adv Con.2010)	EAST & WEST OF ROCHESTER	RECON TO 4 LANE BLVD.	TROY		CON
4R					
OLD WOODWARD (Conv.)	OAK ST. TO WILLITS	4R	BIRMINGHAM		CONV.
14 MILE (Conv.)	CROOKS TO WASHINGTON	4R	CLAWSON		CONV.
RRR					
ROCHESTER ROAD (Adv. Con. 2011)	14 MILE TO ELMWOOD	RRR	RCOC		CON
WALTON BOULEVARD (Adv. Con. 2011)	E/O ADAMS TO CITY LIMIT	RRR	RCOC		CON
ORCHARD LAKE (Adv Con 2011)	8 MILE TO GRAND RIVER	RRR	RCOC		CON
STEPHENSON HIGHWAY (Conv.)	SB GIRARD TO 14 MILE	RRR	MADISON HEIGHTS		CONV.
BALDWIN RD	WALTON TO NORTH CITY LIMITS	RRR	PONTIAC		CON
WASHINGTON AVE	WOODWARD TO LINCOLN	RRR	ROYAL OAK		CON
CROOKS RD. (Adv. Con 2010)	N. MAIN ST. TO WEBSTER	RRR	ROYAL OAK		CON
SOUTH BLVD (Adv. Con 2010)	MLK TO OPDYKE	RRR	PONTIAC		CON